



**BLUEPRINTS & CO.**  
P R O P E R T I E S

Sales - Lettings - Management - Mortgages



## Brimsdown Avenue

, Enfield, EN3 5HX

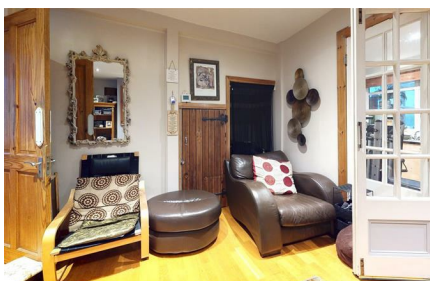
**£399,995**



\*Virtual tour available\* Blueprints & Co Properties are delighted to offer this beautiful brick built mid-terraced 3 bedroom family home, located on Brimsdown Avenue approximately 0.1 miles from Brimsdown station.

This property boasts three generous bedrooms (one with an en-suite) off street parking, a large through lounge reception, an extended fitted kitchen, conservatory and a spacious beautiful garden space. The property offers Great Transport Links to the city. It is Ideal for first time buyers as well as offering great investment opportunity.

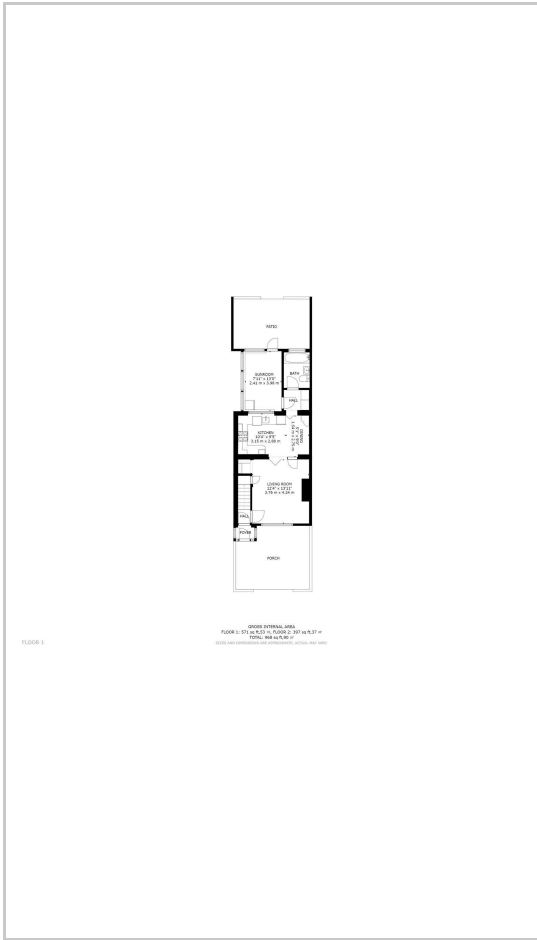
Chain free



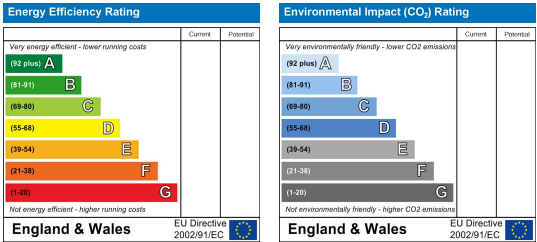
Area Map



Floor Plans



Energy Efficiency Graph



These particulars, whilst believed to be accurate are set out as a general outline only for guidance and do not constitute any part of an offer or contract. Intending purchasers should not rely on them as statements of representation of fact, but must satisfy themselves by inspection or otherwise as to their accuracy. No person in this firms employment has the authority to make or give any representation or warranty in respect of the property.