



BLUEPRINTS & CO.
P R O P E R T I E S

Sales - Lettings - Management - Mortgages



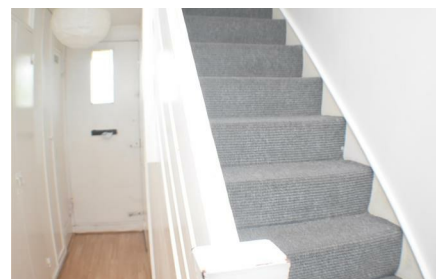
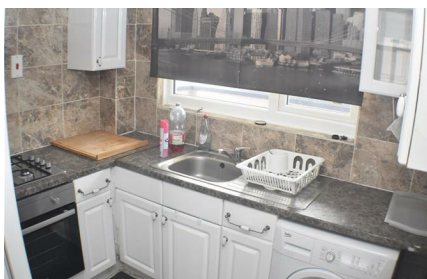
Sherborne Avenue

, Enfield, EN3 5BW

£1,550



Blueprints & Co Properties are delighted to offer to the Market this Three Bedroom First Floor Flat, This Flat is benefiting from one big Reception room, Fitted Kitchen, Upstairs Family Bathroom, Situated in Highly Sought After Location which allows great access to local amenities/ Schools. The property offers Great Transport Links to the city, closest Stations Enfield Wash/Turkey Street Rail Station which takes you to Liverpool Street within approximately 15 minutes.



Area Map



Floor Plans



Energy Efficiency Graph



These particulars, whilst believed to be accurate are set out as a general outline only for guidance and do not constitute any part of an offer or contract. Intending purchasers should not rely on them as statements of representation of fact, but must satisfy themselves by inspection or otherwise as to their accuracy. No person in this firms employment has the authority to make or give any representation or warranty in respect of the property.