



BLUEPRINTS & CO.
P R O P E R T I E S

Sales - Lettings - Management - Mortgages



Northfield Road

, Waltham Cross, EN8 7RF

Offers in excess of £380,000



3



1



1



Blueprints & Co Properties are pleased to offer for sale this three bedroom extended terraced house in the heart of Waltham cross. This home comes with a driveway to the front and a large 30ft garden not overlooked at the rear.

The property itself comprises of a spacious lounge, Bathroom, kitchen on the ground floor, and to the first floor, Three good-sized bedrooms

The local amenities of the Old Pond and Brookfield Shopping Centre are nearby, as well as transport links such as the A10 and M25 a short drive away.

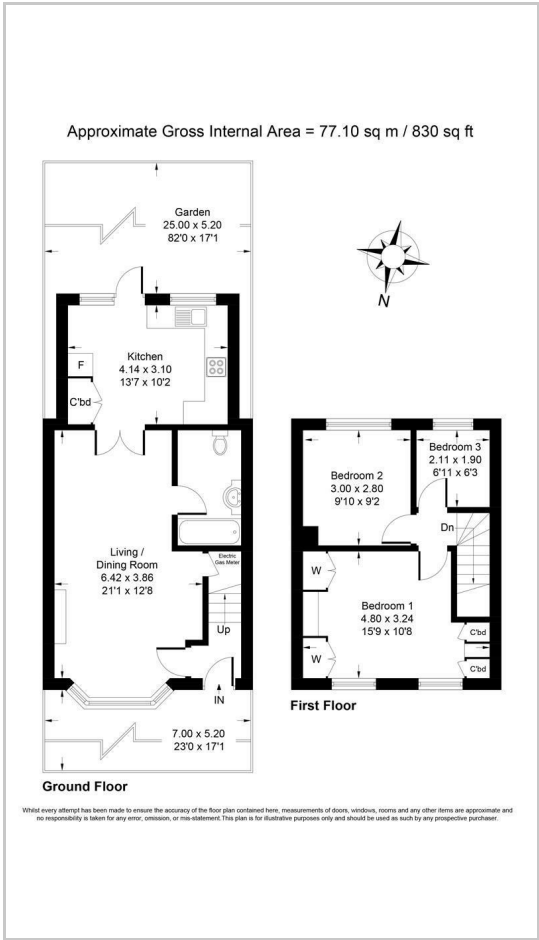
Contact Blueprints & Co Properties today to arrange a viewing to see for yourself what this home has to offer.



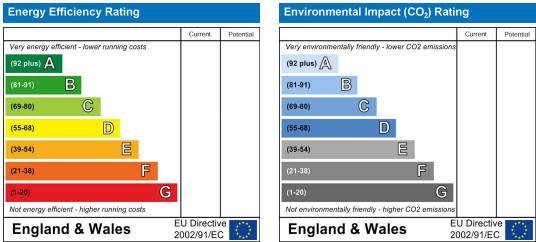
Area Map



Floor Plans



Energy Efficiency Graph



These particulars, whilst believed to be accurate are set out as a general outline only for guidance and do not constitute any part of an offer or contract. Intending purchasers should not rely on them as statements of representation of fact, but must satisfy themselves by inspection or otherwise as to their accuracy. No person in this firm's employment has the authority to make or give any representation or warranty in respect of the property.