



BLUEPRINTS & CO.
P R O P E R T I E S

Sales - Lettings - Management - Mortgages



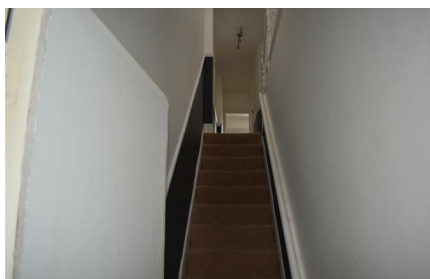
Warham Road

, London, N4 1AT

£1,850



Blueprints & Co Properties redecorated a two-bedroom flat which is close to Finsbury Park. This spacious two-bed flat has been finished to a great standard throughout and offers a great deal of space, alongside excellent transport links nearby. With two double bedrooms, bright reception with a separate kitchen and a modern bathroom suite. This property is local to a wide choice of amenities to choose from, whilst Harringay Green Lanes Station (Overground), Harringay station (National Rail), Manor House station (Piccadilly line), Finsbury Park Station (Victoria/Piccadilly and National Rail lines), Turnpike Lane (Piccadilly Line) are all within walking distance of the property. Available now.



Area Map



Floor Plans



Energy Efficiency Graph



These particulars, whilst believed to be accurate are set out as a general outline only for guidance and do not constitute any part of an offer or contract. Intending purchasers should not rely on them as statements of representation of fact, but must satisfy themselves by inspection or otherwise as to their accuracy. No person in this firms employment has the authority to make or give any representation or warranty in respect of the property.