



BLUEPRINTS & CO.
P R O P E R T I E S

Sales - Lettings - Management - Mortgages



Gareth Drive

, London, N9 9GB

Offers over £300,000

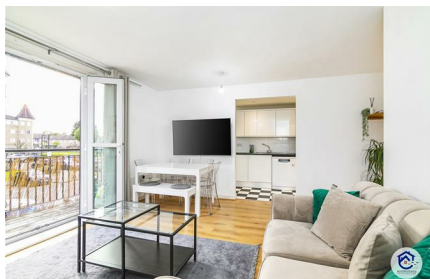


Blueprints & Co. Properties are delighted to offer a opportunity to acquire this beautifully cosy, modern and chain free two bedroom apartment in Edmonton. Benefiting from a communal garden, a private balcony and an allocated parking space.

The first floor flat is in a fantastic condition and excellent investment, with an open plan kitchen / reception that ideally leads out to the private balcony, two double bedrooms with one en suite and a spacious bathroom.

The apartment is close to Pymmes Park, local shops and has great transportation links. Located just a few minutes away from Edmonton Green Train Station and Edmonton Green Shopping Centre, as well as easy access to all the surrounding local amenities.

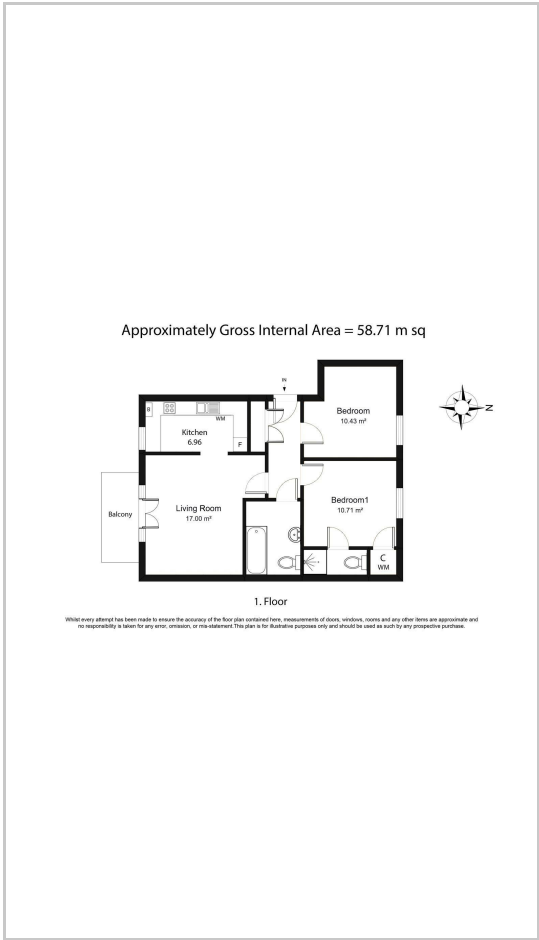
Lease term: roughly 103 years remaining



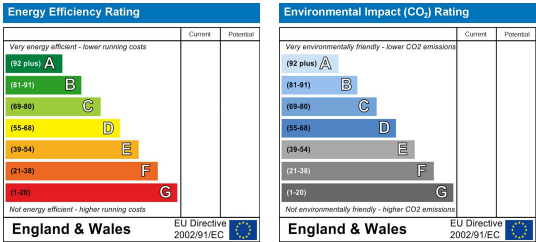
Area Map



Floor Plans



Energy Efficiency Graph



These particulars, whilst believed to be accurate are set out as a general outline only for guidance and do not constitute any part of an offer or contract. Intending purchasers should not rely on them as statements of representation of fact, but must satisfy themselves by inspection or otherwise as to their accuracy. No person in this firms employment has the authority to make or give any representation or warranty in respect of the property.