



BLUEPRINTS & CO.
P R O P E R T I E S

Sales - Lettings - Management - Mortgages



Hewish Road

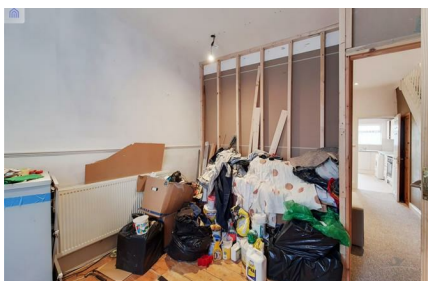
, London, N18 1PS

£400,000



Blueprints & Co. Properties are pleased to present this attractive period house situated in a quiet residential road within short walk to Silver Street where you will find a variety of shops and popular restaurants. The internal living space comprises: Two reception rooms, Kitchen with access to private rear garden. In addition there is a en-suite & family bathroom up stairs with two double bedrooms..

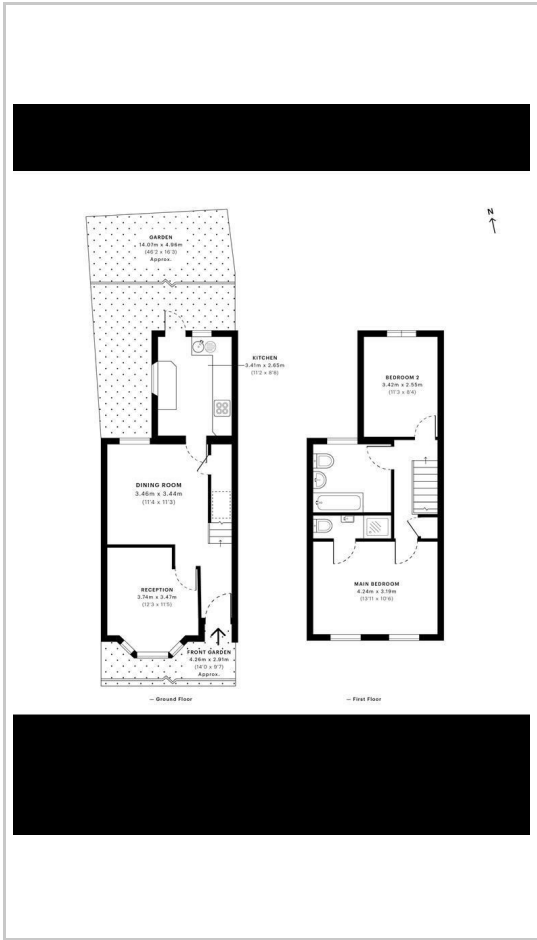
Nearest station is Silver Street Overground which is within 0.5 miles, excellent bus links, local parks and good schools. The property is freehold and is offered on a chain free basis.



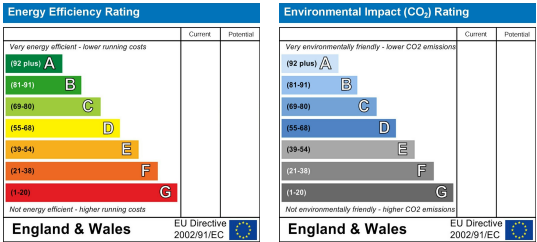
Area Map



Floor Plans



Energy Efficiency Graph



These particulars, whilst believed to be accurate are set out as a general outline only for guidance and do not constitute any part of an offer or contract. Intending purchasers should not rely on them as statements of representation of fact, but must satisfy themselves by inspection or otherwise as to their accuracy. No person in this firms employment has the authority to make or give any representation or warranty in respect of the property.