



BLUEPRINTS & CO.
P R O P E R T I E S

Sales - Lettings - Management - Mortgages



Morley Avenue

, London, N22 6NP

Offers in the region of £510,000



2



1



1

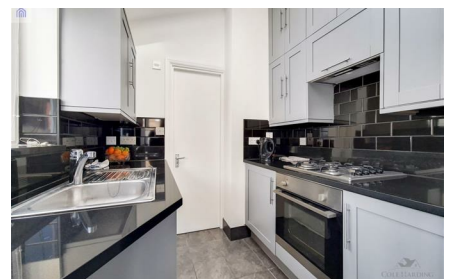


D

Blueprints & Co. Properties are thrilled to present this warm two bedroom Victorian mid-terrace located in the sought after area of Noel Park Wood Green. The property boast lovely open plan large living area, newly fitted kitchen with granite work surfaces, three peice bathroom suite, south facing 40 ft garden and two double bedrooms.

The property is being offered on a chain free basis, and comes with refurbish works to the electrics (Certs included in the sale) new boiler (gas safety included) modern double glazing, fire place, flooring and new roof to the rear.

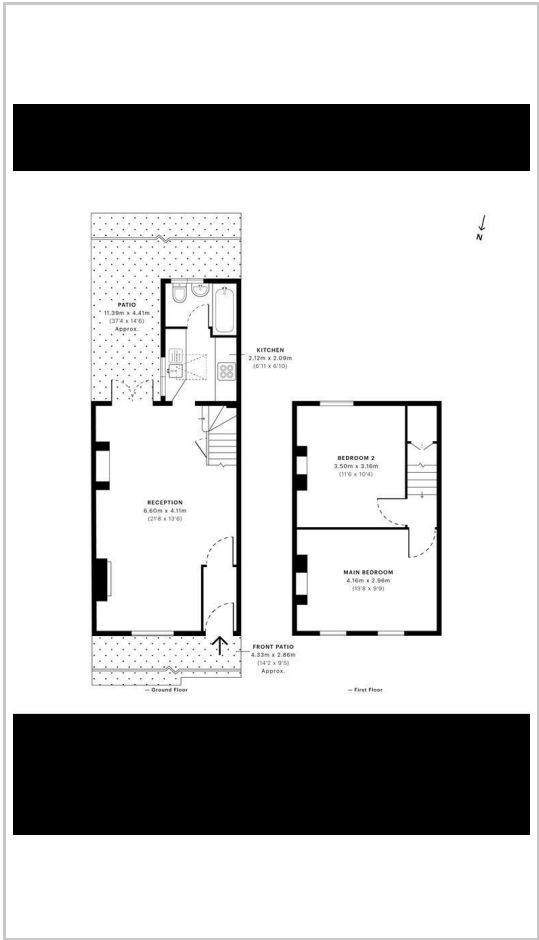
The property is in the catchment for Noel Park primary school and St Thomas More which rate outstanding on ofsted. Walking distance to Wood Green Tube station, Wood Green shopping center and lots of local amenities.



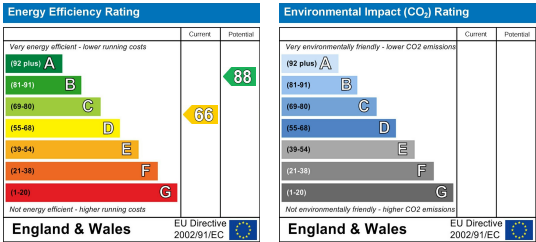
Area Map



Floor Plans



Energy Efficiency Graph



These particulars, whilst believed to be accurate are set out as a general outline only for guidance and do not constitute any part of an offer or contract. Intending purchasers should not rely on them as statements of representation of fact, but must satisfy themselves by inspection or otherwise as to their accuracy. No person in this firms employment has the authority to make or give any representation or warranty in respect of the property.