



**BLUEPRINTS & CO.**  
P R O P E R T I E S

**Sales - Lettings - Management - Mortgages**



## Craig Park Road

, London, N18 2HQ

**Offers over £300,000**



\*Share of freehold\* Introducing a stylish and contemporary two-bedroom Maisonette, offering a perfect blend of modern design and functionality. Located in a sought-after neighborhood, this exceptional property is ideal for those seeking a comfortable. The property boasts two bedrooms and a large reception room which leads to the kitchen in addition to garden access.

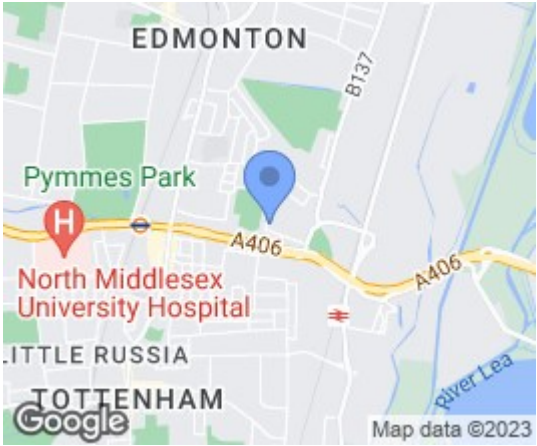
Convenience is at your fingertips with various amenities and services within close proximity. Enjoy easy access to local shops, restaurants, and cafes, allowing for effortless errands and enjoyable dining experiences. Additionally, nearby public transportation links provide quick and convenient commuting options to explore the surrounding areas.

This Maisonette is an excellent opportunity for first-time buyers, young professionals, or those looking to downsize without compromising on style and comfort. With its modern finishes, smart layout, and desirable location.

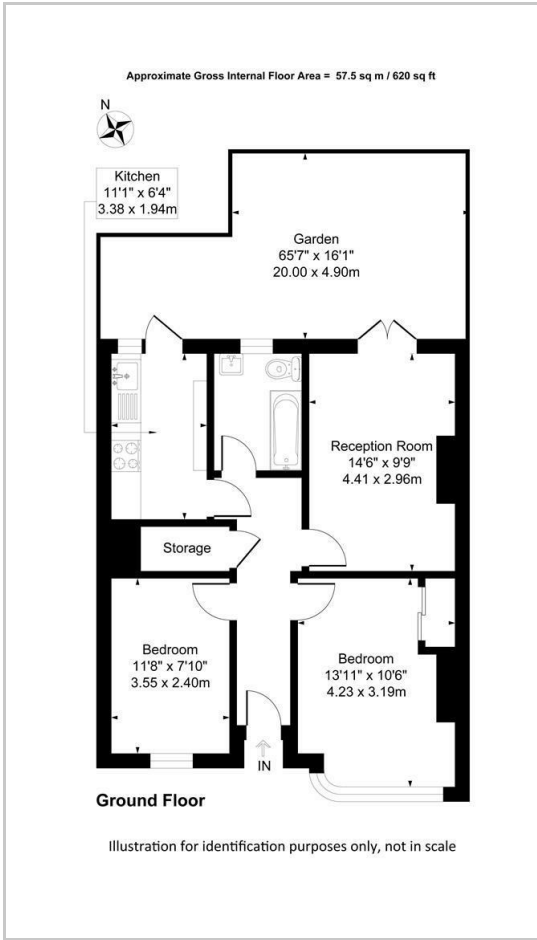
Contact us now to avoid disappointment.



Area Map



Floor Plans



Energy Efficiency Graph



These particulars, whilst believed to be accurate are set out as a general outline only for guidance and do not constitute any part of an offer or contract. Intending purchasers should not rely on them as statements of representation of fact, but must satisfy themselves by inspection or otherwise as to their accuracy. No person in this firm's employment has the authority to make or give any representation or warranty in respect of the property.