



BLUEPRINTS & CO.
P R O P E R T I E S

Sales - Lettings - Management - Mortgages



Baronet Grove

, London, N17 0LX

£2,400



Blueprints & Co Properties are pleased to present this three bedroom period house to let which has been well maintained throughout and boasts a charming 60ft private rear garden. This property is in immaculate condition and the ground floor benefits from a spacious light and airy lounge and dining room, a spacious modern fitted kitchen, ground floor w/c and private rear garden. The first floor consists of two double bedrooms, a single bedroom and three-piece family bathroom suite.

Located moments away from the regeneration taking place in Tottenham and the surrounding areas with the property central to White Hart Lane, Bruce Grove and Northumberland Park stations situated approx. 0.6 miles away. The property is a short walking distance away from bus and transport links providing easy access to the surrounding areas and Central London. Conveniently located close to local shops, amenities and schools.

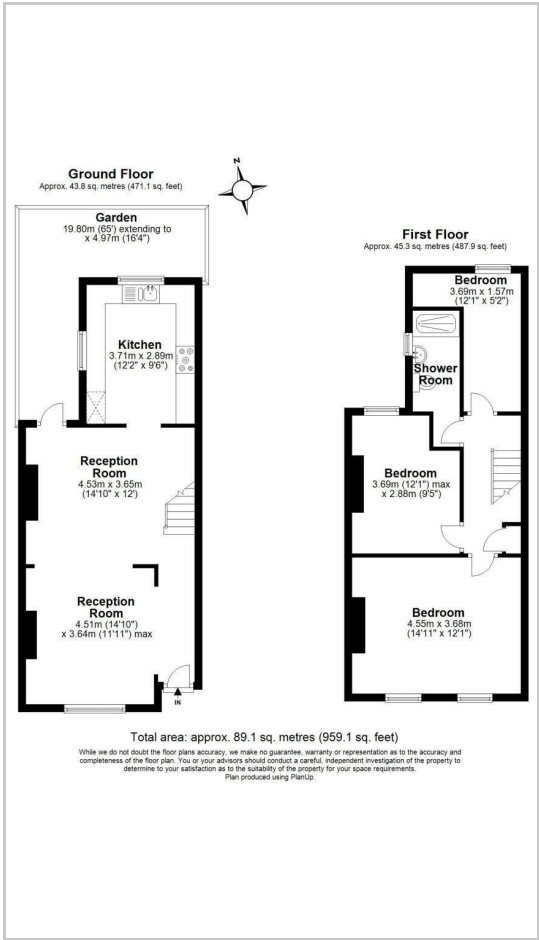
****Working professionals preferred****



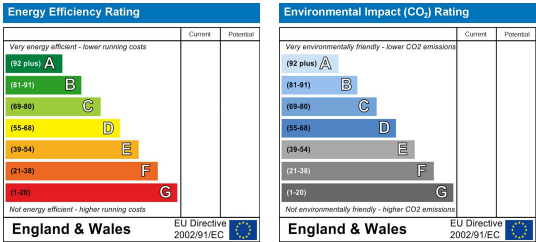
Area Map



Floor Plans



Energy Efficiency Graph



These particulars, whilst believed to be accurate are set out as a general outline only for guidance and do not constitute any part of an offer or contract. Intending purchasers should not rely on them as statements of representation of fact, but must satisfy themselves by inspection or otherwise as to their accuracy. No person in this firms employment has the authority to make or give any representation or warranty in respect of the property.